



NEWSLETTER

Number: 2209 (146)

September 2022



From the chair



Dear Members and Friends,

This last week has been a sombre time for all of us with the loss of Queen Elizabeth II and the beginning of the reign of Charles III. The National Chair of ADFAS, Jane Smith, recognised this, sending out a message to all members on the day of the Queen's death.

On a positive note, we had a very successful lecture with Robert and Catherine Ketton on 27 August 2022. This lecture was a new experience for all of us as we had not one but two presenters. While Robert Ketton brought to life the world and work of the painter JMW Turner, Catherine took to her easel and created a Turner inspired artwork, explaining her tools and techniques. Your feedback was enthusiastic and there was a great deal of animated discussion as we enjoyed our lunch together.

Our next lecture on 24 September is something different again as Dr Grace Cochrane is an expert on crafts and hand-made design, including ceramics and metalwork. She was a senior curator at the Powerhouse Museum in Sydney and has guided numerous exhibitions. Her work was recognised with the award of an AM (Member of the Order of Australia) in 2013.

Following the September meeting our eighth and final lecture for the year will take place on 5 November.

And on 26 November we have our AGM and Christmas party.

We are busily planning this last event for the year. Fortunately for all of us, Colin Howie and Pauline Downing include in their many interests working as volunteers on the restoration of the gardens at Camden Park. They have agreed to give a presentation for the Christmas AGM/Christmas party, titled 'William Macarthur's Garden: A Legacy'.

Some of you have asked about the painting completed by Catherine Ketton that was very kindly donated to our Society. The painting will be included as one of the prizes in the Christmas raffle.

We very much hope you can all be there. Please Save the Date!

Linda

Linda Inglis, Chairman,



COMING PRESENTATIONS

LECTURE 7

INSPIRED! Design across Time and SMART WORKS

Presented by:

Dr Grace Cochrane, AM

Two important Powerhouse Museum exhibitions in 2004 and 2007 have relevance to wider Australian contexts. This talk shows the thematic sections of each exhibition, and includes the work behind the scenes, installation and final displays.

Inspired! Design across Time showed work from the collection across the entire range of decorative arts and design, over 300 years.

Smart Works: Design and the Handmade considered the work of about 40 enterprising designers and makers from Australia and New Zealand.

Saturday 24 September 2022

11.30 am for 12.00 Noon

Carrington Recreation Centre

Gate 2, 90 Werombi Road, Grasmere NSW 2570

For COVID and CATERING reasons BOOKINGS would be appreciated (See below for booking details)

XX

LECTURE 8

The PARIS of the IMPRESSIONISTS 1860-1900

Presented by:

Prof Peter McPhee, AM

Saturday 5 November 2022

11.30 am for 12.00 Noon

Carrington Recreation Centre

Gate 2, 90 Werombi Road, Grasmere NSW 2570

XX

For more information & bookings, contact:

Secretary: Gaylene Feld

Mob: 0417 659 587

Email: gjfeld@bigpond.com

In this Edition

Page 2 has some important information in on membership fees for 2023 (see **MEMBERSHIP MATTERS**), along with details of the 2023 lecture program.

On **page 3** you will find an advance notice of the 2022 AGM and Christmas Function. As you will see it is to be a little different from previous end-of-year functions. More details including cost and booking arrangements will be provided during October.

Cliff Reece has provided something a little different in 'Personal Quirks of Famous Artists' also on **page 3**.

Page 4 brings an article about a London based Australian portrait artist Ralph Heimans, AM who has produced portraits of Queen Elizabeth II, the Duke of Edinburgh and the Prince of Wales, amongst other famous people. Interestingly he was featured on page 6 of the SMH on Monday 19th September.

Page 6 carries two short but rather interesting articles compiled by Gaylene Feld, one on a 'Bendy Bridge' and the other on a new 'Sculpture Trail' in the Snowy Valleys.

A short note on events around the Alan Baker Art Gallery (**Page 7**) and 'What's on at other Societies' (**page 8**) bring this edition to a conclusion

Ed

MEMBERSHIP MATTERS

Your committee has decided that **for the 2023 Lecture season the:**

MEMBERSHIP FEE will remain at \$145

Details of payment arrangements will be provided in the October Newsletter.

As we regroup after the worst of the pandemic, now would be a good time to invite friends or relatives, or both, to share our lectures and encourage them to join our Society.

In fact you may consider giving a membership of ADFAS Camden as a Christmas or Birthday present!

Just a reminder, too, for members to log on to the ADFAS website from time to time and catch up on news and updates from the Association.

The Association website address is:

www.adfas.org.au

Program for 2023

4 March: **1968: THE YEAR THAT CHANGED THE DIRECTION OF ART**

A series of major events in 1968 shook the world and artists responded to the changing times by making work that challenged the traditional assumptions of art.

Presented by: **Anna Moszynska** (TAS)

1 April: **LEONARDO DA VINCI'S LA BELLA PRINCIPESSA - THE REAL THING?**

Explores the recent controversy surrounding two works recently attributed to Leonardo da Vinci: *La Bella Principessa* and *Salvator Mundi*.

Presented by: **Jos Hackforth-Jones** (AUS)

6 May: **THE STORY OF THE CRYSTAL PALACE**

The Crystal Palace dominated the south London skyline for over 80 years until its tragic destruction by fire in 1936.

Presented by: **Ian Gledhill** (TAS)

3 June: **ART NOUVEAU-AHEAD OF THE CURVE**

Popular in Europe and the United States from 1890 – 1910, Art Nouveau was a decorative style that influenced architecture, fine art, illustration, advertising, jewellery, glass and furniture design - a "new art".

Presented by: **Claudia Chan Shaw** (AUS)

8 July: **SINGING IN SECRET-BYRD**

William Byrd led a complicated existence as a devout Catholic in troubled Tudor times, when to infringe strict religious rules ran the risk of imprisonment or even death.

Presented by: **Sandy Burnett** (TAS)

12 August: **THE CULT OF GLORIANA:**

With reference to architecture and gardens, this lecture will focus chiefly on the portraits, miniatures and music of Elizabeth I's court.

Presented by: **Mark Cottle** (TAS)

9 September: **TRAVELLERS AMONG MOUNTAINS AND STREAMS:**

This lecture invites you to explore Chinese landscape painting through the ages in an attempt to convey the development and evolution of this important tradition.

Presented by: **Marie Conte-Helm** (TAS)

7 October: **ATHENS AND ROME: A tale of two cities**

Athens and Rome were two of the most beautiful, powerful and important cities of the ancient world - Athens the home of democracy, the cradle of the arts, Rome the eternal city, the capital of the world.

Presented by: **Paul Roberts** (TAS)

ADFAS Camden

AGM

Annual Reports
Election of Office bearers and Committee

Presentation

William Macarthur's Garden: A Legacy
Pauline Downing & Colin Howie

Christmas Party

Champagne, wine, juices
Savoury & sweet finger foods
Special raffles



Venue: Carrington Recreation Centre, Gate 2 90 Werombi Road Grasmere

Time: 11.30 for 12.00 noon

Date: Saturday 26 November, 2022

Cost: To be advised – more details in the October Newsletter



Personal Quirks of Famous Artists

Cliff Reece

Michelangelo

Michelangelo, the painter of the Sistine Chapel, was one of the rare artists who became famous during his lifetime. However, despite his wealth, Michelangelo was pretty lacklustre in the hygiene department.

He apparently never bathed and rarely changed his clothes. In fact, on his deathbed, it is believed that his clothing had to be peeled off him!

Leonardo da Vinci

Although his art and mechanical designs are his most well-known achievements, he was also one of the earliest known European vegetarians and would regularly buy caged birds just to let them go free.



Picasso

When people would ask about the meaning of his paintings, question the almighty Cézanne (who was a close friend), or just rub him the wrong way in general, Picasso would point his revolver at them. Fortunately, the gun was filled with blanks, but it still sent a very clear message!

Salvador Dalí



Salvador made a point throughout his life of being as weird as possible. These efforts included owning an ocelot that he would walk throughout the city, having a very weird moustache, and speaking in the third person.

He did not miss an opportunity to surprise, no matter how unnecessary it was. This is exemplified by his habit of stealing pens from fans who asked him

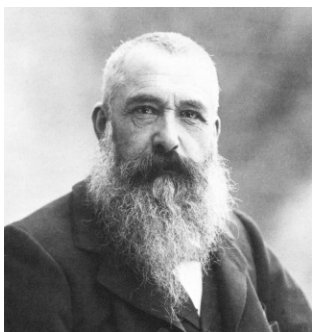
for autographs. It's pretty harmless, but it's doubtful that he needed all of those pens!

Paul Gauguin

Gauguin, who later went on to influence Matisse and Picasso, had a rocky friendship with Vincent Van Gogh. Some speculate that this may be because it was Gauguin, not Van Gogh himself, who cut off his earlobe during a sparring match.

Gauguin was an expert fencer, and while this explanation of the ear-lopping cannot be confirmed, it is certainly true that he was a scary dude with a sword.

Claude Monet



While Monet is known for his beautiful paintings of water lilies and other idyllic natural scenes, he started out drawing offensive doodles.

Monet was a rebellious student who often slacked on his work while drawing caricatures of teachers and peers.

Jackson Pollock

Jackson completely revolutionized the world of abstract art, but he also had a pretty rough go of it as a teenager. He didn't fit in at his Los Angeles school, where he apparently wore unusual clothes and grew out his hair.

He was even expelled several times for getting in trouble with the law, and he wrote to his brother, telling him that "this so-called happy part of one's life, youth, to me is a bit of damnable hell."

Caravaggio

Caravaggio did things his own way, which was a little more unorthodox and violent than most. He lived by his own complicated and severe honour code in which missteps were met with oddly specific physical punishments.

For example, a Roman waiter who questioned the painter's meal got a plate smashed in his mouth, and Caravaggio night-stalked a young painter who had insulted him behind his back and attacked him with a sword!

Georgia O'Keeffe

Georgia preferred a very specific, very cramped space as her studio: a Model-A Ford.

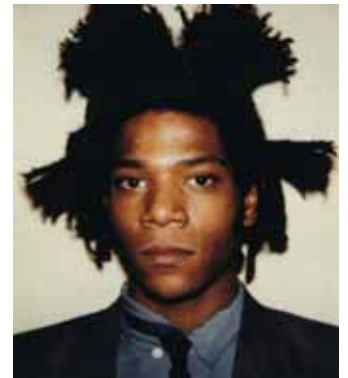
In order to shield herself from the harsh sun present in her desert landscapes, she would take out the driver's seat and reverse the passenger seat so that it faced the back. She would then place the canvas on the back seat and paint from the passenger seat. Apparently, this also kept her safe from bees!



Jean-Michel Basquiat

Jean-Michel took inspiration from graffiti so it's no surprise that he painted pretty much whatever was around him, whether it was clothing, furniture, or a fridge. However, he liked to look good while he did it.

Basquiat liked to wear Armani suits as he painted and then wear them later on at social events, still covered in paint.



With thanks to Ranker Digital Media Company

About Ralph Heimans

Gaylene Feld

Ralph Heimans, AM, is a London based Australian artist and is one of today's leading portrait artists. He was born in 1970 in Sydney where he attended Mosman High School and at 17 won the Australian National Art Award in 1987. He then studied architecture, fine art and pure mathematics before



completing his BA at Sydney University in 1991, continuing to study drawing at the Julian Ashton Art School.

In 2014 Heiman was awarded a Member of the Order of Australia for Services to Portraiture.

His official portrait of HM Queen Elizabeth II was produced for the Diamond Jubilee in 2012 and now hangs in Westminster Abbey. His portraits of the Duke of Edinburgh (2017) and HRH the Prince Wales (2018) are in the Royal Collection.

Other notable works include HRH Crown Princess Mary of Denmark, Dame Judi Dench, Sir Ben Kingsley, Dame Quentin Bryce, Michael Kirby (judge) and Margaret Atwood.

Works by Heiman are held in major collections including the Royal Collection, Westminster Abbey, the National Portrait Gallery in Washington DC, the National History Museum of Denmark, the National Portrait Gallery of Australia, Australia's Parliament House and the European Court in Luxembourg.

Heiman now lives in south London with his wife and two daughters.

Portrait of Queen Elizabeth II



The portrait named, 'The Coronations Theatre' was painted in 2012 to mark the Diamond Jubilee of Queen Elizabeth II. Her majesty is portrayed in Westminster Abbey standing at the centre of the Casmati pavement where she had been crowned 60 years previously.

The Casmati pavement, referred to by Shakespeare as 'the floor of heaven', is rich in symbolism and was created to evoke 'the eternal pattern of the universe'. It has been an integral part of the coronation since Henry III and where every monarch has been crowned for the last 900 years.

The Queen is depicted wearing a state dress beneath the crimson Robe of State which she wore at her coronation in 1953. She has worn the robe to the State Opening of Parliament each year. Her diamond necklace and earrings were

made for Queen Victoria's coronation and were worn by Queen Elizabeth on the day of her coronation.

The portrait was unveiled at the National Portrait Gallery of Australia in 2012. It was acquired by Westminster Abbey and displayed in London 2013 to celebrate the Diamond Jubilee anniversary of the coronation. It is now on permanent display in the Diamond Jubilee Galleries of Westminster.

Some interesting facts regarding the painting of Her Majesty

- He only had an hour with the queen
- He wanted to show her in a rare introspective moment. There was some resistance from the palace staff on the day and the dresser was quite adamant she should be looking up and looking quite cheery.
- The Queen chose the Robe of State to wear which weighed so much that four people were needed to help carry it.
- Given a time frame of six months from the sitting to the unveiling he worked 20 hour days

Portrait of the Duke of Edinburgh

The Portrait of the Duke of Edinburgh was produced 2017 to commemorate the Duke of Edinburgh's retirement from public, at the age of 96.



The portrait is set in the corridor at Windsor Castle, the private quarters of the Royal Couple. The Duke is depicted in evening attire wearing the sash of the Order of the Elephant, Denmark's highest ranking honour. The Duke was born a Prince of Denmark and his ancestry spans both the British and Danish Royal Families.

Windsor Castle, held special significance for the Duke since the end of the Grand Corridor is the Tapestry Room where his mother, Princess Alice, and his maternal grandmother, Princess Victoria, were born.

Portrait of the Prince of Wales (now King Charles III)



This portrait was unveiled at an event to Honour the Prince of Wales 70th birthday at Australia House, London.

Set in Dumfries House, the portrait references the Prince's commitment to the environment.

The portrait shows Prince Charles standing by a window through which a large oak tree is seen. The tree is reflected in the lid of the grand piano inside – 'bringing nature into the room and referencing HRH's advocacy for the integration of nature, architecture and art'.

Resources

www.ralphheimans.com
[Wikipedia en.wikipedia.org](http://Wikipedia.en.wikipedia.org)
DailyMail.co.uk

THE BENDY BRIDGE – GRAFTON

Gaylene Feld

Back in 1859 a steam punt carried passengers across the Clarence River – the 'Big River'.

This year the Clarence Valley Council celebrated the 90th birthday of a piece of infrastructure that was integral to the development of the North Coast and intercity transport of Grafton, the Grafton Bridge.

The double decker Grafton Bridge, opened by Governor General Sir Isaac Isaacs on 19 July 1932 is known to the locals as the 'Bendy Bridge' because it has a bend at each approach to allow the railway to continue straight ahead while the road diverges.

The bridge solved all sorts of logistical problems, especially for rail traffic and is still going strong, remaining a vital part of the Clarence Valley transport network.

It is a heritage-listed bascule truss bridge that carries the Bent Street traffic and North Coast railway line across the Clarence River linking the Grafton central business district to south Grafton. The bridge was added to the New South Wales State Heritage Register on 2 April 1999.



A parallel New Grafton Bridge, located 70 metres east of the original bridge and consisting of two lanes was opened to traffic on 12 December 2019.

The murals under the new bridge are by contemporary artists Blake Douglas, Jason Wing and Kade Valja



Resource
Coffstrails.com

SNOWY VALLEYS SCULPTURE TRAIL

The Snowy Valleys Sculpture Trail is a series of sculptures in the historic towns of Adelong, Batlow, Tumbarumba and Tooma and the vineyards of Courabyra Wines, Johansen Wines and Obsession Wines.

The Snowy Valleys Sculpture Trail, which stretches 100km from Adelong to Tooma, was created by the team behind *Sculpture by the Sea* at Bondi and Cottesloe in consultation with The Snowy Valleys Council and Local Community Advisory Group.

With over 20 sculptures by Australian and international artists from countries such as, Denmark, Japan, South Africa, Czech Republic, the Trail was launched in May this year.

Each of the locations in the Snowy Valley Sculpture trail has its collection:-

- The Adelong Creek Walk – a 1km sculpture trail along the creek to Adelong Falls Gold Mill Ruins
- Pioneer Street in Batlow from the artist studio/gallery to Batlow Library
- Courabyra Wines Tumbarumba
- Johansen Wines Tumbarumba
- Tumbarumba Creekscape, Goldfields Park Tumbarumba
- Obsession Wines
- Tooma (Brigham House and Tooma Inn)
- Sculptures at the northern entrances to Tumbarumba and Batlow

Artists have visited schools to provide sculpture making workshops.

David Handley, Founding CEO & Artistic Director of *Sculpture by the Sea* said, "Thank you to the members of the communities across the Snowy Valleys for preparing the local celebrations in their towns to welcome visitors from across the Snowy Valleys."

Additional sculptures are to be installed later in 2022 and the first half of 2023.



Left:
 Marcus Tatton Habitat,
 Tumbarumba
Photo John Riddell

Below:
 Tanis Spencer Gumnut
 Cap Trio, Adelong
Photo Fiona Dalessandro



Right:
 Haruyuki Uchida, Thinking
 Red
Credit Grant Hardwick



Below:
 Keizo Ushido's sculpture
Credit John Riddell



Resource
sculpturbythesea.com; thewest.com.au

HERITAGE DRAWING

Join Alan Baker Art Gallery on the grounds of the historic Macaria to learn how to create architectural drawings of heritage buildings and the urban environment using ink and wash techniques. All skill levels welcome.

When: Saturday 24 September, 10am-1pm (break included)
Cost: \$20 per session

LIFE DRAWING (18+ ONLY)

Take the opportunity to study the nude figure in this tutored life drawing session. Be a part of a warm and welcoming evening group that encourages creative expression and the sharing of ideas. All skill levels welcome.

When: Thursday 20 October, 6:30-8:30pm
Cost: \$40 per tutored session

WORKSHOP FACILITATORS

Alan Baker Art Gallery is seeking expressions of interests from local artists or art teachers to facilitate workshops in 2022, including watercolour painting, drawing skills, life drawing and specialty workshops (we're open to ideas!).

CREATIVE COLLAB

The second Creative Collab forum will host Create NSW members Tammy Close, Arts Funding and Development Manager, and Jane Pollard, Lead Arts Funding and Development.

Learn about upcoming opportunities for artists and develop skills and understanding on grant writing.

When: Thursday 15 September, 6-9pm
Where: Ferguson Gallery, Camden Civic Centre



GRANTS FOR COMMUNITY GROUPS

Camden Council has opened a new round of grants for community groups and organisations, open until midnight 1 October 2022. The grants that can be applied for are:

- Community Small Grants Program
- Community Small Grants Program - Sport and Recreation
- Community Sponsorship Program

Applicants are strongly encouraged to attend an online information session before applying. See Camden Council Website for more information including booking details.

AND DON'T FORGET TO DROP INTO THE GALLERY FOR A VISIT FROM TIME TO TIME

WHAT'S ON AT OTHER SOCIETIES?

ADFAS Blue Mountains:

Next lecture: Friday 28 October at 2.00 pm, Wentworth Falls School of Arts, Great Western Highway, Wentworth Falls.

Robert & Catherine Ketton will present '*Turner – the Explorer*'.
(Contact: bluemountains@adfas.org.au)

ADFAS Bowral & District:

Next lecture: Wednesday 28 September at 5.00 pm Bradman Museum 7 Cricket Hall of Fame, St Jude St, Bowral.

Geoffrey Edwards will present '*Streams of Fire and Tongues of Flame: a short history of glass.*'

(Contact: secretary@adfasbowral.com)

ADFAS Canberra:

Next lecture: Monday 24 October at 6.00 pm at The National Library of Australia.

Peter McPhee will present '*Painting the French Revolution*'.

(Contact: adfasmembershipcanberra@gmail.com)

ADFAS Ku-ring-gai:

Next lecture: Wednesday 2 November at 10.30 am and at 6.00 pm at Zenith Theatre, Chatswood.

Peter McPhee will present '*Painting the French Revolution*'.

(Contact: kuringgai@adfas.org.au)

ADFAS Molonglo Plains:

Next lecture: Thursday 27 October at 2.00 pm at the Queanbeyan Bicentennial Hall, 253 Crawford St. Queanbeyan.

Peter McPhee will present '*Two Women Paint the French Revolution*'.

(Contact: adfasmembershipmolonglo@gmail.com)

ADFAS Newcastle:

Next lecture: Monday 26 September, at 6.30 pm at the Hunter Theatre, School of Performing Arts, Lambton Rd, Broadmeadow

Geoffrey Edwards will present '*The Problematic Statue: A Brief History of Debunking & Desecrating Public Monuments*'

(Contact: Secretary@adfasnewcastle.org.au)

ADFAS Pokolbin:

Next lecture: Monday 10 October at 6.45 pm at Cessnock Performing Arts Centre, cnr of Vincent St & Aberdare Rd, Cessnock.

Robert & Catherine Ketton will present '*Turner – the Explorer*'.

(Contact: secretary@adfaspokolbin.org.au)

ADFAS Scone

Next lecture: Friday 11 October at 6.30 pm at Scone Arts & Crafts.

Robert & Catherine Ketton will present '*Turner – the Explorer*'.

(Contact: scone@adfas.org.au)

ADFAS Shoalhaven

Next lecture: Thursday 29 September at 7.30 pm at the Uniting Church Hall, 71-77 Alfred St, Berry.

Geoffrey Edwards will present '*Bells & Pomegranates - painters, paintings & the poetry of the Brownings and Tennyson.*'

(Contact: shoalhaven@adfas.org.au)

ADFAS Sydney

Next lecture: Thursday 20 October at 7.30 pm at the Paddington Woollahra RSL Club 220-232 Oxford Street Paddington.

Robert & Catherine Ketton will present '*Turner – the Explorer*'.

(Contact: David Andrews 0413 554 024)

Programmes & contact details for ALL Societies are available on the ADFAS website: www.adfas.org.au

Exploring Turner with the Kettons 27 August



Robert and Catherine Ketton



Catherine Ketton and Chair, Linda Inglis



Meredith Lawrie and Jo Wong – looking after the raffle

Editor

Peter Claxton
4655 9781

pclaxton8@bigpond.com

ADFAS CAMDEN Inc.

Honorary Secretary

Gaylene Feld
0417 659 587

gjfeld@bigpond.com

PO Box 146 Camden NSW 2570

www.adfas.org.au