

Yarra News

Spring 2024 Vol. 35 No. 3

From the Chair

Welcome to our third and final newsletter for 2024.

Since our last newsletter we have had three excellent lectures. In May Anne Anderson discussed the development of Scandinavian Design. In June Cresside Collette introduced us to the art of Ceylon/Sri Lanka and in July Dan Evans showed us details of Michelangelo's decoration of the Sistine Chapel ceiling including the subversive elements!

Our May Special Interest afternoon was well attended. Members were treated to a wonderful lecture, Art Nouveau: New Art for the New Century 1880-1960 from Anne Anderson as well as a delicious afternoon tea provided by committee members.

Details on the remaining lectures for the year and on our September excursion are included in this newsletter. Please be aware that our final lecture in November is preceded by our AGM which will begin at 10.00 am on Thursday 7 November in the Auditorium. There is no afternoon lecture on that day.

In 2023 we introduced a new membership renewal procedure using the TryBooking system. Many of you also use this system when booking for Special Interest events and Excursions. As I explained last year the use of Trybooking has significantly reduced the workload for our Membership Secretary and Treasurer. Due to rising costs for lecturer accommodation and transport, venue hire and catering 2025 membership fees will be increased by \$10. Single Memberships will be \$170 and \$330 for Couples. You will be advised by email when renewals open.

Last year I advised members that in 2021 National ADFAS commenced a process to determine whether ADFAS should change its name and that in July 2023 the Executive Committee approved ArtsNational as its new business name. This name change was then approved at a Council Meeting attended by the National Executive and all Society Chairs in September 2023. While most societies have since moved to the new name, 9 including the 4 Victorian societies currently continue to use ADFAS. If you search for ADFAS on the internet the search will display ArtsNational. However, a search for ADFAS Yarra will still direct you to our website.

In July we welcomed two new members, Carole Stubbs and Kate Elder, to our committee. Their assistance particularly on lecture days has been very much appreciated. I want to thank our entire committee for the extraordinary effort that they put in this year. I also want to thank those members who have offered their assistance on lecture days and to all members for your support and kind words of appreciation of the committee's efforts.

Jan Bennellick
Chair, ADFAS Yarra

We had a great lecture last November by Dr Alison Inglis on 'Victorias Magnificent Regional Art Galleries' of which there are over twenty to visit. I love our regional galleries and, of course, our National Gallery of Australia (NGA). As an ex NGA guide where I was spoilt with the advantage of having those mega exhibitions all to myself, I now must pay and shuffle along with the crowds! Its still fun...

1. Bendigo regional art gallery

My most recent exhibition was 'Paris Impressions of Life 1880 - 1925'. Im sure that some of you took a trip to Paris aka Bendigo Regional Art Gallery.

The nine rooms took me down memory lane, the busy banks of the Seine, grand Hoffmann boulevards, beautiful public spaces, famous restaurants, fashion, racecourses, and the life in Montmartre

The Musee Carnevet founded in 1866, showcases the History of Paris, was closed when I stayed in the Marais district (Rue de Temple) but vhas now been refurbished and hence the main sponsor of this exhibition.

Over 170 items from their collection were on display (their total holdings are over 620,000 items from the Mesolithic period to present day)

The Belle Epoque was also known as the Golden Age. Wonderful Toulouse Lautrec posters, some artists from that period (but not enough for me) for example ,Jean Beraud born 1849 in St Petersburg died in Paris 1939), street signs and everyday signs of life.



2. Gippsland art gallery (gag)

Who was lucky to see Annamieke Meins "A life work" in Sale at the GAG.

Annamieke is famed for her extraordinary depictions of native Australian wildlife, birds insects and plants, in three-dimensional textile. Her works are noted for their realistic texture and colour, often capturing the delicate beauty of her subjects in a way that reveals their often overlooked details.

She was born in the Netherlands in 1944 and later moved to Australia in 1951. Initially pursuing a career in nursing, she eventually shifted her focus to art. She has just turned 80 and the last piece as you leave the Gallery is a "work -in-progress" Such talent. This exhibition spanned 60 years of her outstanding artwork. Over the years she has gained international recognition and several awards including the Australian Medal in 1988 for her contribution to the arts.



Our 2024 spring excursion

THURSDAY 19th September
SPRING GARDENS OF JINDIVICK
Treasures of the Square Mile

JINDIVICK a small town in Victoria is known for its beautiful Spring Gardens.
We will visit 2 gardens

1. PICARDY GARDEN

A picturesque French inspired charming garden, beautifully designed landscapes, vibrant flower beds and a tranquil ambiance, particularly stunning in Spring

2. BROUGHTON HALL GARDENS

Famous for its stunning design, terraced gardens, water features and wide variety of plants, including rare and exotic species.

It should prove to be a delightful day out in early Spring.

Do come along. The cost of the excursion is \$130

Coach will leave Central Park East Malvern at 0800 and return around 1630

Bookings can be made via Trybooking.



Australian Tapestry Workshop

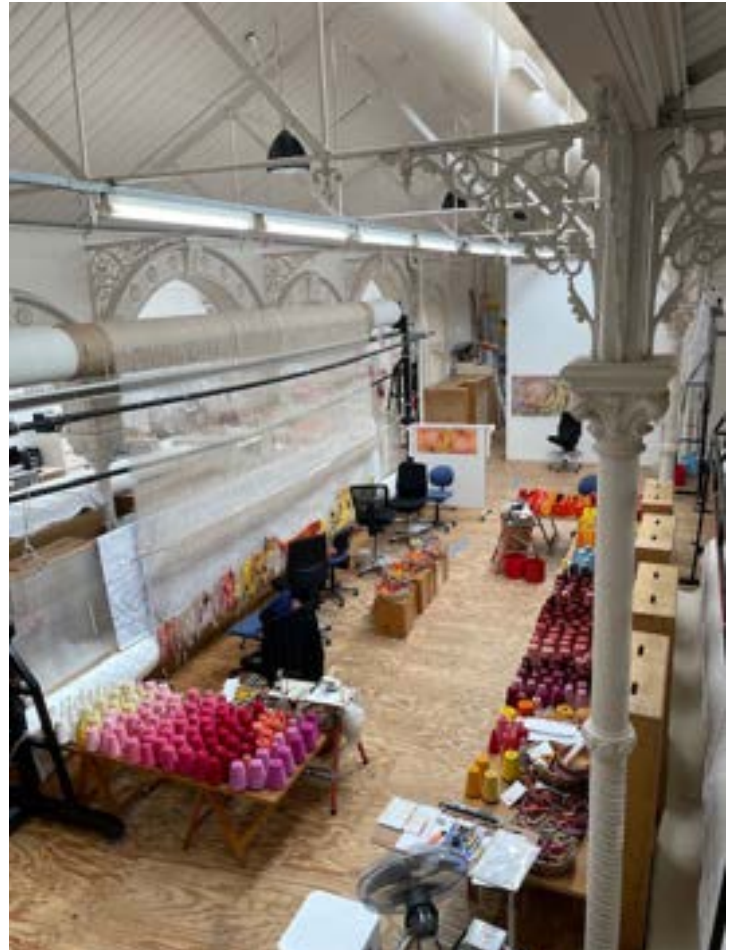
Several members of the ADFAS Yarra committee toured the Australian Tapestry Workshop (ATW) on Friday 12 July. The ATW is a small not-for-profit arts organization with a worldwide reputation for creating contemporary tapestries. Yarns are custom dyed on site.

The committee saw weavers creating a tapestry mural on-site, and enjoyed two exhibitions, one of works by Kaimurai, a recent artist in residence.

ADFAS Yarra supported ATW under our Young and Emerging Arts Program
The tapestries and exhibitions are terrific, and we strongly recommend a visit!

The ATW is at 262-266 Park Street, South Melbourne and open to the public Tuesday to Saturday 1-5pm. Guided tours can be arranged.

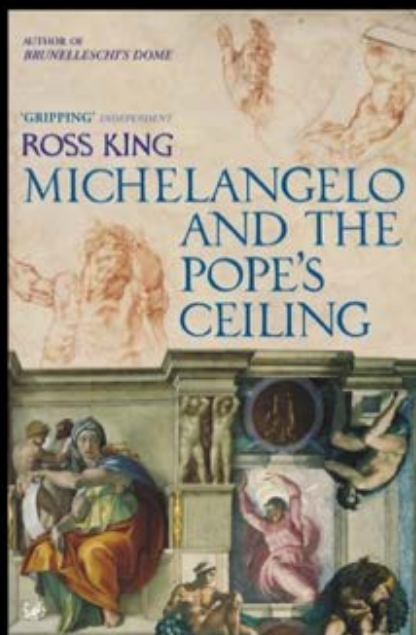
<https://www.austapestry.com.au>



Odd & ends

Our lecture on the 4th July
by Daniel Evans

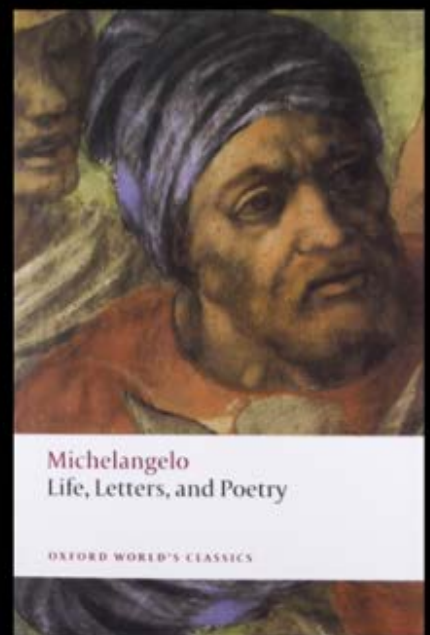
The Sistine Chapel Ceiling Cracked, was very well received and most enjoyable
Dan has provided copies of his books that he referred to in his presentation



ROSS KING, MICHELANGELO & THE POPE'S CEILING



HUGO CHAPMAN, MICHELANGELO DRAWINGS: CLOSER TO THE MASTER



MICHELANGELO, LIFE, LETTERS & POETRY

Upcoming Events

Lecture 7

THURSDAY 29 AUGUST

10.00 am & 1.30 pm

Paradise Lost and Restored: 400 years of garden design in Oxfordshire

The title of this talk refers to the fact that one of the motivations for garden design remains the desire to create paradise on Earth. The history of English garden design can be told in different ways, but rarely can it be told 'through the lens' of one garden. The Oxford Botanic Garden was founded at the beginning of the 17th century. This talk explores how the art of gardening has changed and how the Oxford Botanic Garden now reflects modern garden design.

TIMOTHY WALKER



Lecture 8

THURSDAY 17 OCTOBER

10.00 am & 1.30 pm

Frank Lloyd's Sense of Place

This lecture focusses on private homes constructed with local materials to harmonise with their magnificent natural landscapes. Wright's architectural designs are site-specific. Ecologically ahead of their times, they exploit local materials and provide shelter from local weather. From Falling Water, a millionaire's residential retreat in Pennsylvania, to affordable - even prefab - urban housing in Milwaukee, each construction is married to its unique setting. His all-on-one-level Prairie houses spread out over Mid-West farmland, while the ascending spiral ramp in the Guggenheim Museum in New York completely redefined gallery spaces.

DEBORAH JENNER



Lecture 9

THURSDAY 7 NOVEMBER

10.00 am & 1.30 pm

The Wallace Collection

The Wallace Collection is a treasure trove of exceptional art works housed in Hertford House in Marylebone, London. The collection of art and decorative objects was assembled by the first four Marquesses of Hertford from the 15th to the 19th centuries and was bequeathed to the public by Richard Wallace, philanthropist, Francophile and illegitimate son of the 4th Marquess. It is renowned especially for its sumptuous display of Sevres porcelain, armour, French tortoiseshell inlaid cabinets, paintings by Boucher and Watteau and masterpieces by Rembrandt, Hals, Velasquez and Reynolds.

SYLVIA SEGONA



Guests are most welcome to attend lectures. Prior booking for guests is essential and a \$25 fee applies. Please call Esther Lewin on 0493 433 817 for further details.

Young and Emerging Artists program

On Sunday 11/8 four members of the ADFAs Yarra committee attended a most delightful Sunday soirée- A PIANO DAY put on by Australian National Academy of Music (ANAM)

ADFAS Yarra sponsors a musician each year and last years recipient, Ronan Apcar, performed 3 beautiful pieces. Five other piano musicians performed beautifully too.

After the performance, we spoke to Ronan who was so appreciative of ADFAS support and wished to pass on his thanks to our members

ANAM has a performing training program which is an intense commitment for young talented musicians over a three year period.

ADFAS Yarra is proud to be contributing to educating the next generation of Australian musicians.



Send contributions, including interesting art and design articles, travel articles, jokes, life's helpful hints, art exhibitions to: **Editor:** Wendy Coxhead to adfasyarra@gmail.com
www.adfas.org.au Copyright © ADFAS Yarra Inc. 2024