

MAIN PARKING LOCATIONS FOR THE C3 CHURCH AUDITORIUM

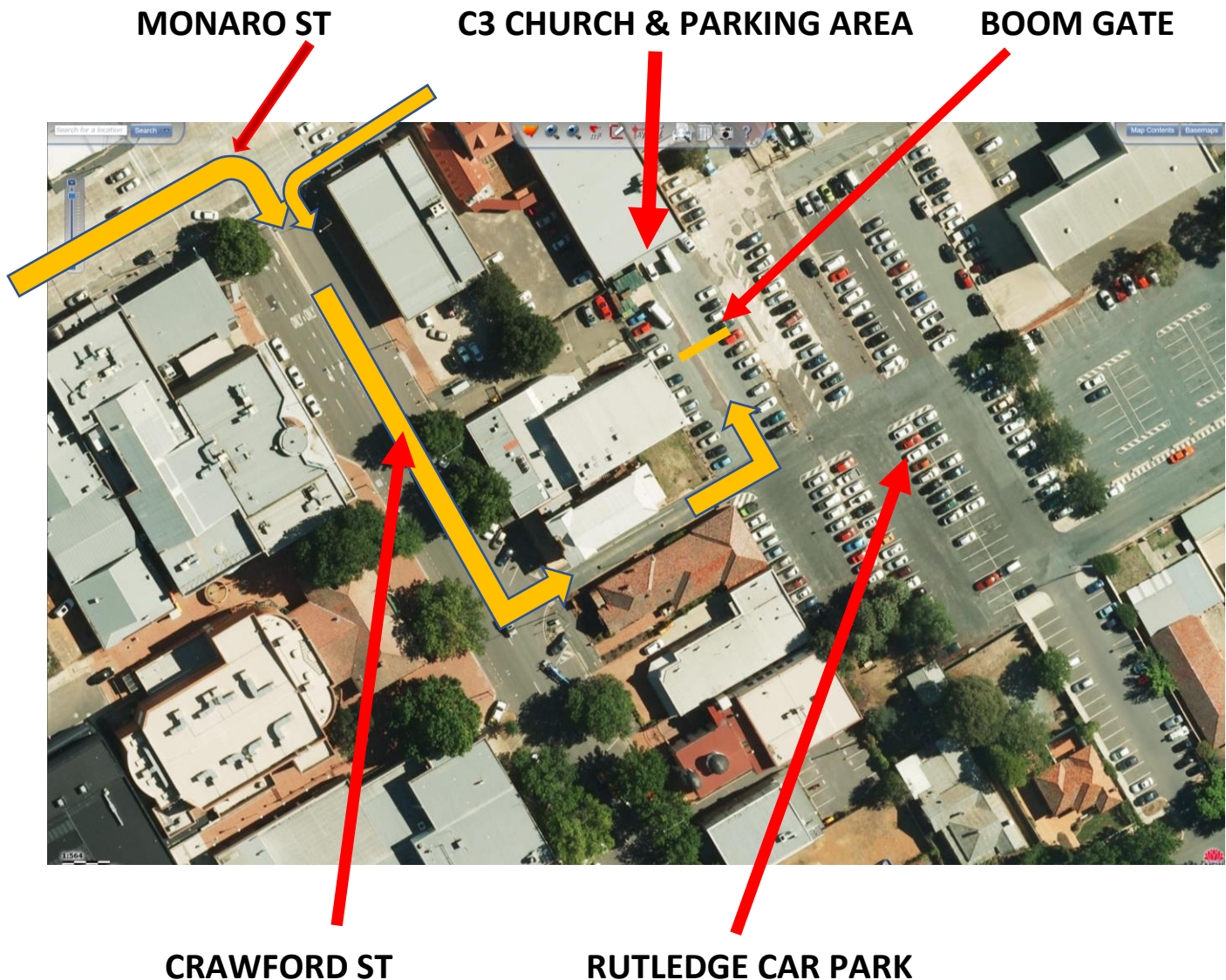


PARKING	Enter from	Duration	Remarks
P Lowe	Lowe St (opp. St Gregory's School)	3 hrs	Plenty of spaces, incl disabled and EV. Up to 6 min walking time.
P Rutledge	Crawford St Rutledge St (opp. Christ Church)	Unlimited	Recommended Car Parking See over page 1 - 2 min walking time
P C3 Church	Crawford St or Rutledge Car Park	Unlimited	C3 Church has approx 20 parking spaces, including two disabled spots.
P Morisset	Morisset St (next to Morisset House) Lowe St (opp. Queanbeyan Park)	1, 2 & 3 hrs	5 – 10 min walking time
P Collett	Collet St (opp. K Mart parking area) Morisset St (opp. caravan park)	Unlimited	15 – 20 min walking time
Rutledge St	Enter from various directions	1, 2, U/L	Up to 6 min walking time
QPRC Underground	NEW! Enter from Rutledge St. A number of 3-hour spots, incl some disabled. 4 – 8 min.		

MAIN PARKING LOCATIONS FOR THE C3 CHURCH AUDITORIUM

How to find the C3 Auditorium & Parking Area

Please allow ample time to find a suitable parking space.



The C3 Church parking area is at the end of a short, one-way lane which is also the main access to the Rutledge Car Park. Enter the lane from Crawford St, between the Masonic Temple and Baker Deane & Nutt Solicitors' offices.

1. If driving along Monaro St, turn into Crawford St at the traffic lights.
2. Drive along Crawford St about 100m and turn left into the lane.
3. Drive along the lane about 50 m and turn left.
4. You may see a boom gate controlling access to the C3 parking area.
5. Park in any spot beyond the boom gate.
6. If full, park elsewhere in the Rutledge Car Park or use the now completed Lowe or QPRC Underground car parks